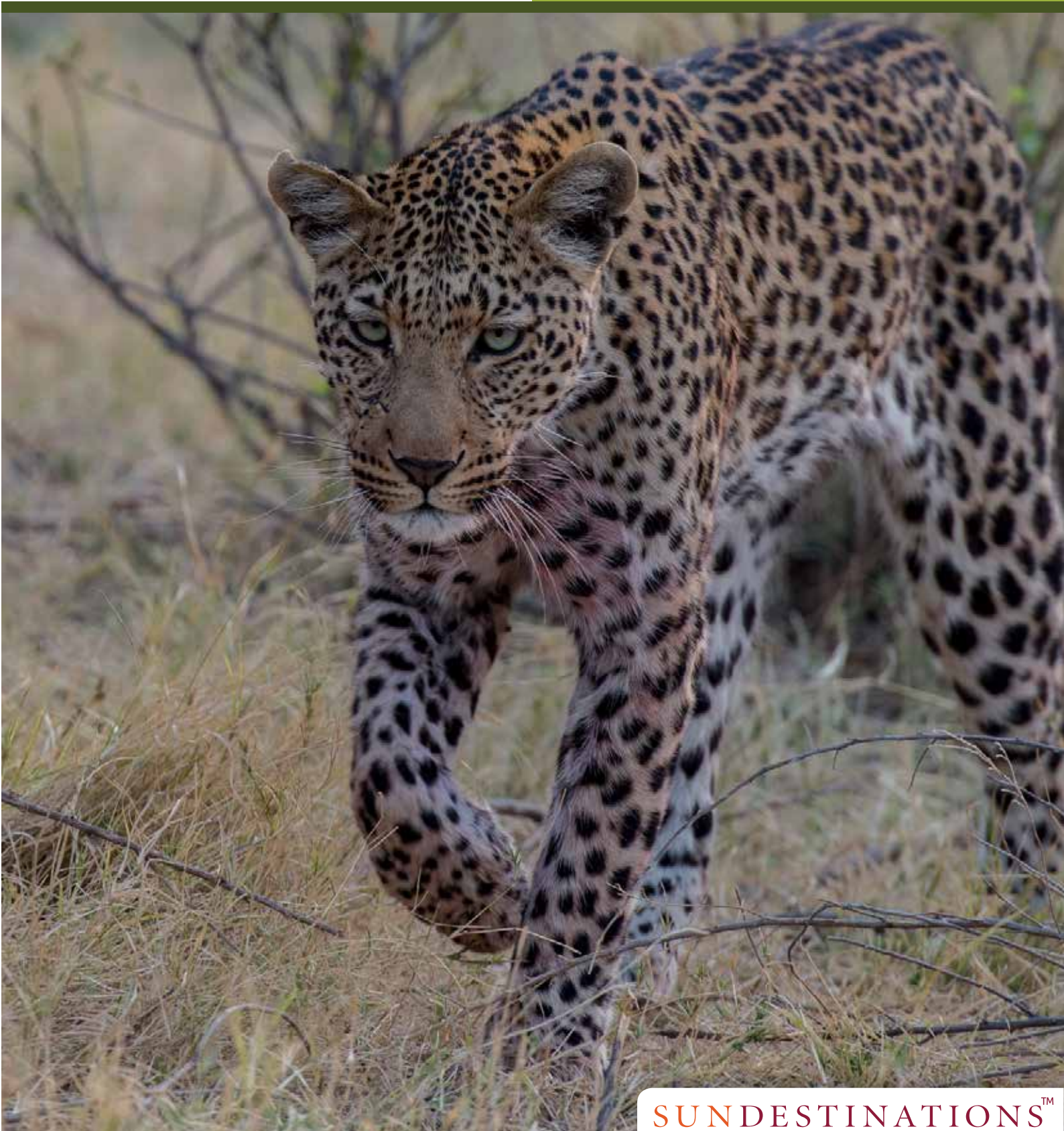




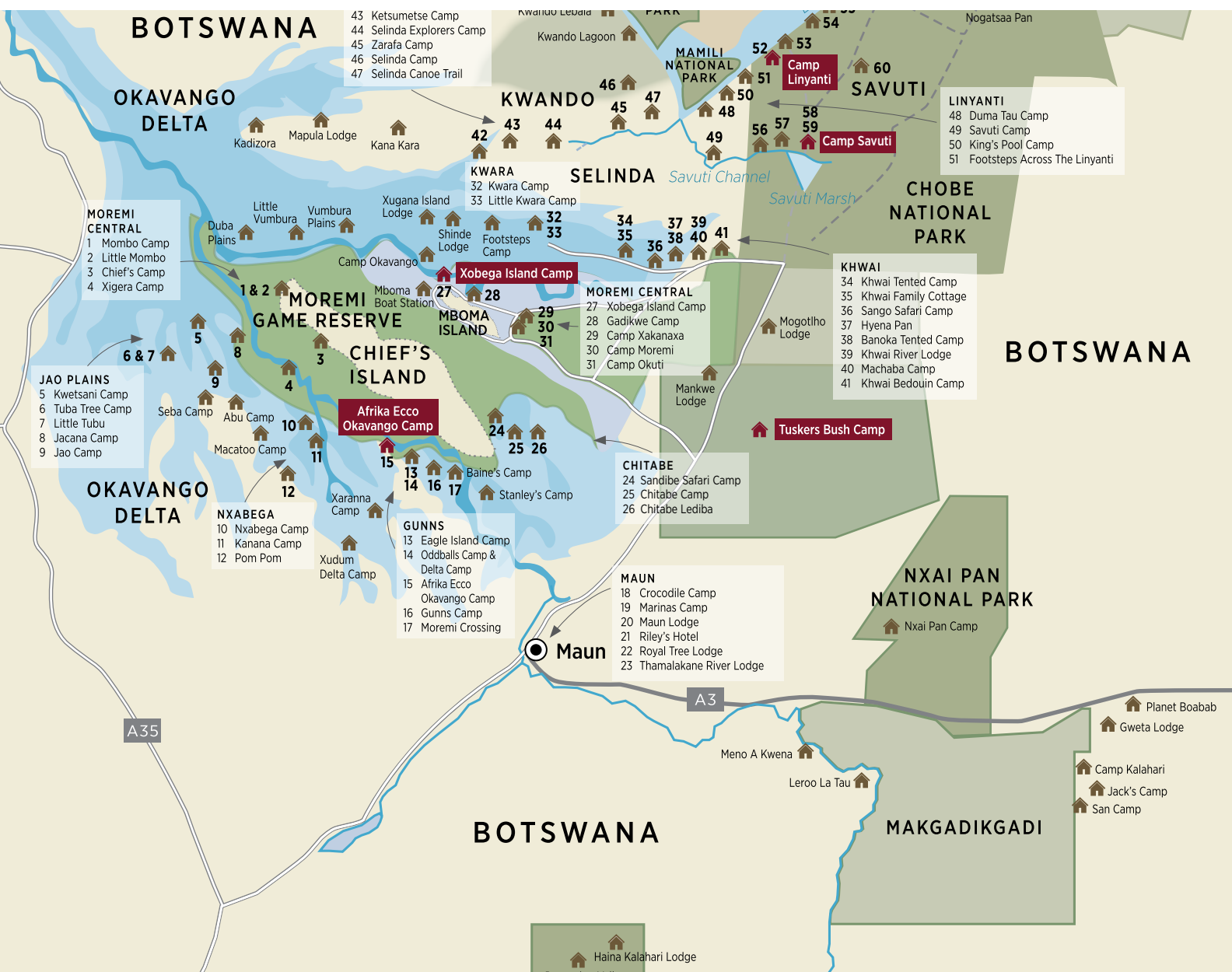
AFRIKA ECCO

MOBILE SAFARIS

DIRECTIONS



SUNDESTINATIONS™



DIRECTIONS TO AFRIKA ECCO

Most Afrika Ecco Safaris begin with a scheduled flight from Johannesburg or Cape Town to Maun airport, from where you will be transferred by an Afrika Ecco representative through the quaint safari town to your next destination.

Trips that begin in the Central Kalahari Game Reserve require a night spent at Audi Camp in Maun before embarking on the 7-hour journey to Deception Valley. Trips that begin in the Okavango Delta can depart on the same day of arrival in Maun provided that guests' flights arrive before 12 pm. A journey to Xaxaba Island in the Delta is a pleasant 3-4 hour boat cruise from the Maun boat station (departing 14h30).

The tailor-made itineraries will determine guests' first destination in Botswana, whether that be Audi Camp in Maun, or a private island in the Okavango Delta. Whatever it may be, Afrika Ecco Safaris will be at the airport to meet guests as they arrive in the country.

